

CONTENTS

APRIL 2017 • VOL. 231 • NO. 4 • OFFICIAL JOURNAL OF THE NATIONAL GEOGRAPHIC SOCIETY

FRONT

3 QUESTIONS

Geoffrey Rush on playing the "great part" of Einstein

VISIONS

EXPLORE: WATER

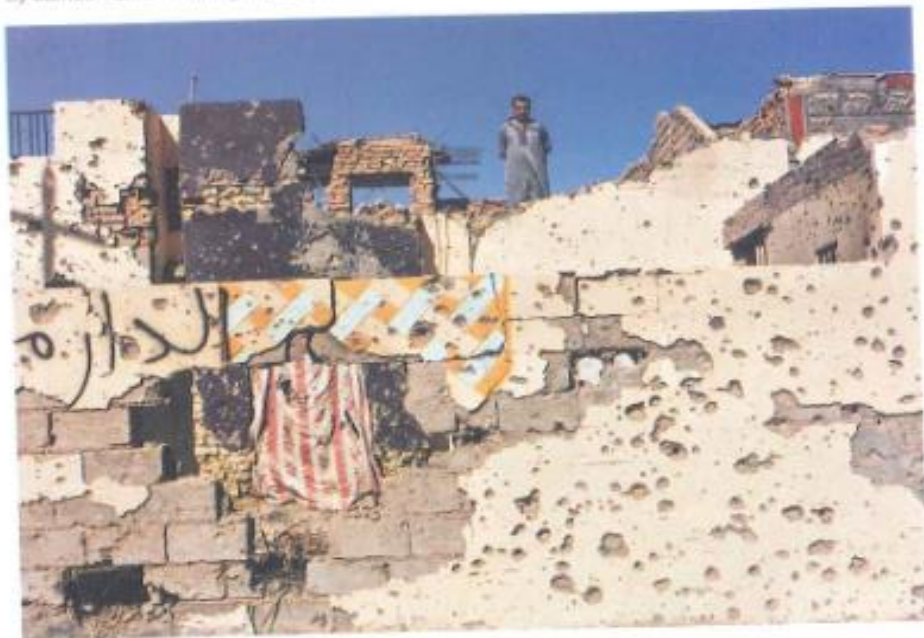
In the water: fish, trash, signs of stress. Out of water: people worldwide.

FEATURES

96 | LIFE AFTER ISIS

As Iraqi and coalition forces moved to retake Mosul in 2016, fleeing Iraqis told harrowing stories of the Islamic State's brutal reign.

By James Verini Photographs by Moses Saman



On the Cover From Stone Age hunter-gatherers to today's high-tech pioneers, humans increasingly have taken evolution into our own hands. Where will our species go next? Illustration by Owen Freeman

Corrections and Clarifications
Go to natgeo.com/corrections.

30 | CLIMATE CHANGE: 7 THINGS YOU NEED TO KNOW

The scientific facts about threats to the planet and how to mitigate them.

72 | GRASS-EATING MONKEYS OF ETHIOPIA

A community aims to shield habitat that geladas need.

By Craig Welch
Photographs by Jeffrey Herby and Trevor Beck Frost

40 | BEYOND HUMAN

Are humans still evolving? Yes, under the influence of culture and technology.

By D. T. Max
Illustrations by Owen Freeman

124 | TINY RUINS

Artists' miniature tableaux depict abandoned cities gone to seed.

By Jeremy Berlin
Photographs by Lori Nix and Kathleen Gerber

64 | HOME ON THE RANGE

Modernity and tradition meet in a Pakistani village.

Story and Photographs by
Matthieu Paley

134 | RACING THE THAW

Alaska natives hope to rescue ancestral artifacts before the sea takes them.

By A. R. Williams
Photographs by Erika Larsen

ELSEWHERE



NATIONAL GEOGRAPHIC BOOKS

MEET THE PASSENGERS OF THE PHOTO ARK

The waxy monkey tree frog above is one of more than 6,000 animals immortalized in portraits by photographer Joel Sartore, who is circling the globe in his quest to photograph every species in captivity. See hundreds of Sartore's colorful subjects in his new book, *The Photo Ark: One Man's Quest to Document the World's Animals*, available at shopng.com or wherever books are sold.

NAT GEO WILD

GO BARKING WILD FOR A WEEKEND

Nat Geo WILD's third annual BarkFest weekend is a celebration of furry best friends of all shapes and sizes. Tune in for canine capers all weekend long starting April 14 at 8/7c, on Nat Geo WILD.

NATIONAL GEOGRAPHIC BOOKS

TURN YOUR BAD DAY AROUND ...

...with 365 tales of other days that were worse. Michael Farquhar's *Bad Days in History*, now in paperback, lists "an instance of bad luck, epic misfortune, or unadulterated mayhem" for each day of the year. A grim April example: On the 20th in 1889, Adolf Hitler was born. *Bad Days* is available at shopng.com and wherever books are sold.

NATIONAL GEOGRAPHIC KIDS

TALKING TRASH TO HELP THE PLANET

In time for Earth Day, April 22: *THIS BOOK STINKS!* a colorful look at the science of trash. For ages eight through 12, it covers topics from composting to clever uses of rubbish. Available at shopng.com and wherever books are sold.

TELEVISION

WHO GETS WATER IN A DROUGHT?

This view of California's Central Valley—lush orchards across from fallow ones—embodies the point of *Water & Power: A California Heist*. The documentary examines the state's history of water manipulations and the risk they pose to vital U.S. farmlands. Watch it on National Geographic at 9 ET/PT on March 14. The facts behind *Water & Power* inspired the three-part series *Parched*, a report on global water issues. It airs on National Geographic at 10 ET/PT on March 21, March 28, and April 4.



NATGEO.COM VIDEO

A DAY IN THE LIFE OF A GELADA MONKEY

From the high cliffs above East Africa's Great Rift Valley to the misty plateau of Guassa, "bleeding heart" monkeys play, search for food, and explore the Ethiopian Highlands. See the video at ngm.com/Apr2017.

Subscriptions For subscriptions or changes of address, contact Customer Service at ngmservice.com or call 1-800-847-6463. Outside the U.S. or Canada call +1-853-979-6845. We occasionally make our subscriber names available to companies whose products or services might be of interest to you. If you prefer not to be included, you may request that your name be removed from promotion lists by calling 1-800-NGS-LINE (647-5483). To prevent your name from being available to all direct mail companies, contact Mail Preferences Service, c/o Direct Marketing Association, P.O. Box 9006, Farmingdale, NY 11735-9006.

Contributions to the National Geographic Society are tax deductible under Section 501(c)(3) of the U.S. tax code. © Copyright © 2017 National Geographic Partners, LLC. All rights reserved. National Geographic and Yellow Border: Registered Trademarks. Maracas Registradas. National Geographic assumes no responsibility for unsolicited materials. Printed in U.S.A.

NATIONAL GEOGRAPHIC (ISSN 0027-9384) PUBLISHED MONTHLY BY NATIONAL GEOGRAPHIC PARTNERS, LLC, 1145 0TH ST. N.W., WASHINGTON, DC 20036. ONE YEAR MEMBERSHIP: \$39.00 U.S. DELIV. ERY: \$44.00 TO CANADA. \$50.00 TO INTERNATIONAL ADDRESSES. SINGLE ISSUE: \$7.00 U.S. DELIV. \$10.00 CANADA. \$15.00 INTERNATIONAL. (ALL PRICES PLUS FUNDS INCLUDES SHIPPING AND HANDLING FEES). PERIODICALS POSTAGE PAID AT WASHINGTON, DC, AND ADDITIONAL MAILING OFFICES. POSTMASTER: SEND ADDRESS CHANGES TO NATIONAL GEOGRAPHIC, P.O. BOX 6210, TAMPA, FL 33662. IN CANADA, AGREEMENT NUMBER 40063048. RETURN UNDELIVERABLE ADDRESSES TO NATIONAL GEOGRAPHIC, PO BOX 448, STN A, TORONTO, ONTARIO M5W 3A2. UNITED KINGDOM: HUNTSWOOD PRICES: £5.00. RETURN IN FRANCE: 5.95. FRANCE SA. BP 1029, 59011 LILLE CEDEX. TEL: 320 350 302. CFPAP 07150507. DIRECTOR PUBLICATION: D. TASSINARI. DIR. RESP. ITALY: RAFFAELLO SRI. VIA C. DA VELATE 11, 20152 MILANO, AUT. TRIB. MI 258/2075/84 POSTE ITALIANE SPA. SPED. ARR. POST. DL 353/2003 (CONV. L. 2/10/2004 N. 46) ART. 1 C. 1 DDB MILANO STAMP. QUAD/CN/PHICS. MARTINISBURG, WV 25406. MEMBERS IF THE POSTAL SERVICE ALERTS US THAT YOUR MAGAZINE IS UNDELIVERABLE, WE WILL TRY FURTHER. OBSERVATION: IF WE RECEIVE A CORRECTED ADDRESS WITHIN TWO YEARS,