

# Engineer your career with Inti

THE Engineering Programme at Inti College is one of its most popular and fastest-growing programmes.

Its high entry requirement attracts students of excellent academic calibre.

A testament to this is the outstanding results achieved by Inti engineering students at top British universities where they complete their degree studies.

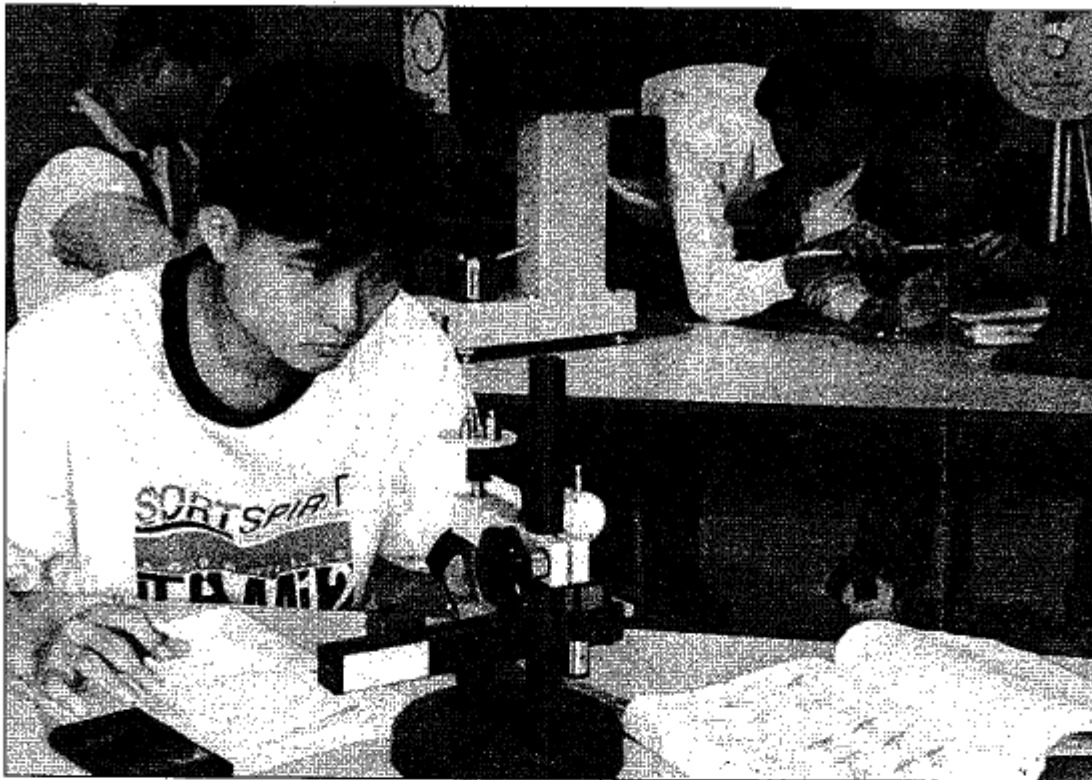
Last year, all 78 students at the Universities of Leeds, Birmingham, Liverpool and Nottingham achieved 100% passes, with 35 of them graduating with first class honours.

David Baker, Head of International and Schools Liaison Office of the University of Leeds, in a congratulatory letter to the President of Inti College, praised the students for their impressive record.

He said "this is clearly due in no small part to the college's reputation in attracting very strong candidates, and to the solid preparation they are given by you."

With the establishment of its Main Campus at Bandar Baru Nilai, Inti College is even better equipped with engineering laboratories and workshops that have state-of-the-art teaching tools such as some of the most sophisticated engineering application and simulation software available.

Some of this high-end software includes Arena Manufacturing System Simulation, Workspace Robotic Simulation, Electronic Workbench, Labvolt Electrochemical Systems Simulation Software and Matlab.



Students performing a practical session at the Engineering Lab.

Other computer laboratory software packages include Autocad and Minitab, compilers for Fortran, Pascal, C and Assembler, with servers running on the UNIX operating system.

According to Lambert Siow, Assistant Dean, the School of Engineering and Technology offers more than 100 courses.

The School has 31 spacious laboratories and workshops that can cater for 30-40 students per lab session.

At the Main Campus, the Autocad labs employ high-speed computers that are suitable for tasks that require high computational power.

High-speed plotters are used to

print out coloured hard copies that facilitate student designs by presenting two or three dimensional images.

With laboratories equipped at a cost of more than RM2mil, students can be assured of first class engineering facilities at Inti College.

The Civil Engineering Laboratories, for instance, contain equipment that is used in commercial labs.

In the Materials Lab, students can make use of a Universal Testing Machine for testing the strength of steel bars.

In the Survey Lab, Total Station which are high-end surveying instruments, are available.

The Concrete Lab boasts concrete cube testing equipment to determine the compressive strength of concrete.

The Structures Lab has a range of equipment for students to learn the principles of structural analysis and design.

At Inti College, students pursue engineering courses: the American University programme, British Degree programme, the Higher Diploma in Engineering and the Diploma Engineering programmes.

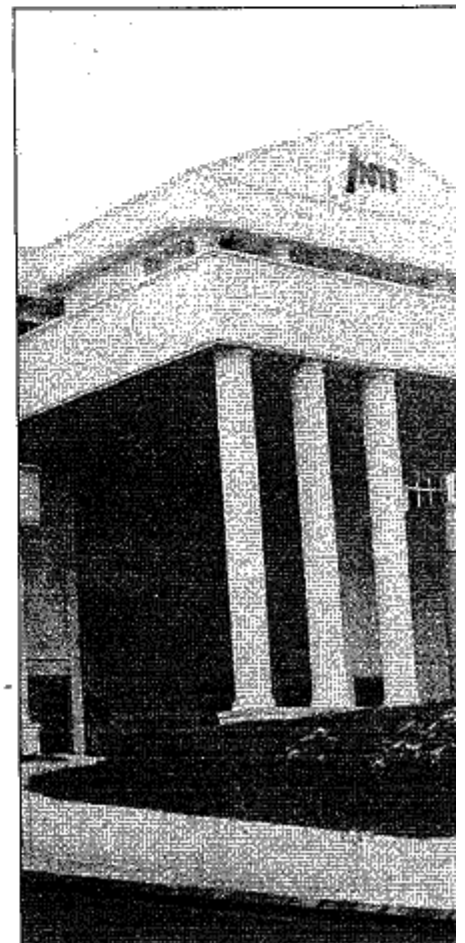
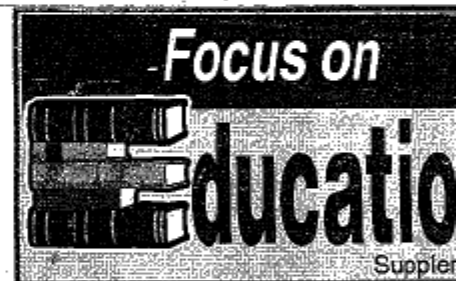
Students with the Diploma Engineering now have the option of earning a degree by furthering their studies in Britain or Australia.

Both the diploma and degree programmes offer majors in mechanical, electronic and electrical, and manufacturing systems engineering.

In addition, the degree programme includes chemical engineering while the diploma programme also offers mechatronics and computer engineering.

The next intake for engineering courses is Dec 24.

For further information, please call 03-734 3244 or 06-798 2011.



The main campus of Inti College in Bandar Baru Nilai.