



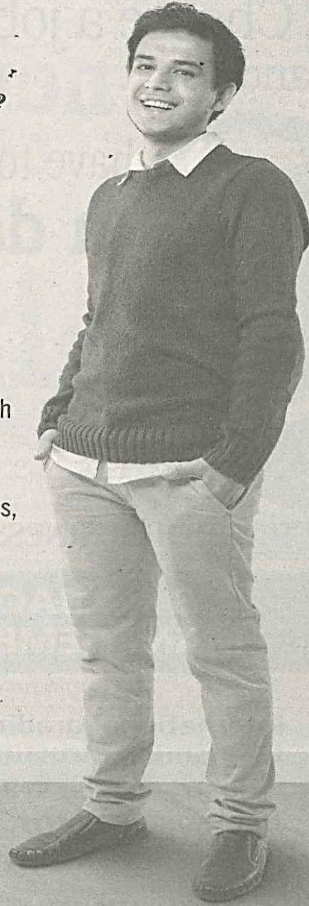
STAR 16/01/2014 : Thursday / Pg. 5 (Education Guide) - Advert

How do I get a head-start in my career?

By getting Personalised Guidance before I graduate.

At INTI, we champion an individualised approach that provides the mentorship and insights you need to excel. And with international exposure as well as innovative learning experiences, your aspirations are within reach.

INTI. Education that Empowers.



Enrol now for a programme that is International, Innovative, and Individualised.
Master's Degree | Degree | Pre-U | Diploma | Certificate

- Accounting & Finance • American Degree Transfer Program (AUP)
- Art & Design • Biotechnology • Business • Computing & IT
- Engineering • Event Management • Hotel Management & Culinary Arts • Law
- Mass Communication • Physiotherapy • Traditional Chinese Medicine

January intake in progress.
Come visit us at our campuses. Open daily 10am – 5pm.



INTI
International University
LAUREATE INTERNATIONAL UNIVERSITIES*

Our Network:
INTI International University, Putra Nilai
INTI International College Subang
INTI International College Kuala Lumpur
INTI International College Penang
INTI College Sabah

INTI International University KPTJ/PS(OPTA/BN/0) 06-798 2000 Persiaran Perdana BBN, 71900 Putra Nilai | INTI International College Subang 8551 112 03-5623 2800 No. 3, Jalan SS15/8, 47500 Subang | INTI International College Kuala Lumpur 0627520 (Formerly known as Metropolitan College) 03-2052 2888 Menara KH, Jalan Sultan Ismail, 50250 Kuala Lumpur | INTI International College Penang 641 003 04-631 0138 No. 1-Z, Lebuh Bukit Jambul, 11900 Penang | INTI College Sabah 641 001 088-76 5701 Lot. 17-20, Phase 1B, Taman Putatan Baru, Kota Kinabalu, 88200 Sabah
American Degree Transfer Program (AUP) – INTI International University: KPTJ/PS(A4606)03/2015 (Applied Science), KPTJ/PS(A4605)07/2014 (Arts) | INTI International College Subang: KPTJ/PS(A5761)09/2014 (Applied Science), KPTJ/PS(A5760)09/2014 (Arts) | INTI International College Penang: KPTJ/PS(A7301)01/2016 (Applied Science), KPTJ/PS(A7300)01/2016 (Arts)